





## Pearl "chanterelle"



partly with fine flame structures

© Swiss Gemmological Institute SSEF



## Melo pearls



© Swiss Gemmological Institute SSEF





The last Emperor of Vietnam  
Bao Dai 保大 (1913-1997).  
Resignation 1945 and exile in  
Paris (France).

Swiss Gemmological Institute SSEF

**SSEF**  
SWISS GEMMOLOGICAL INSTITUTE

## A unique collection of Melo pearls



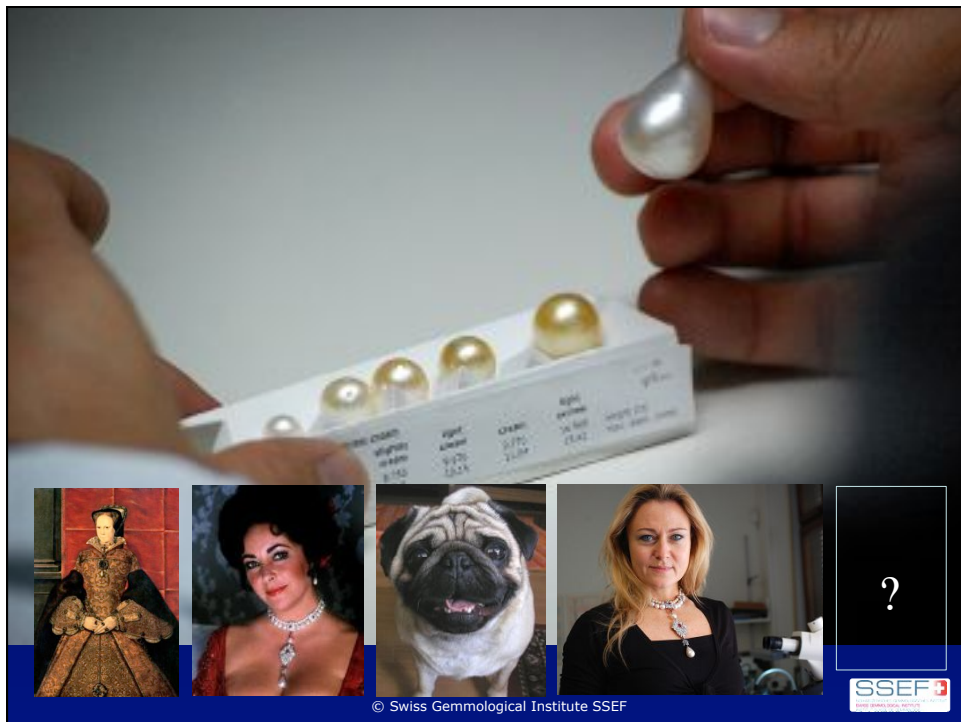
© Swiss Gemmological Institute SSEF

**SSEF**  
SWISS GEMMOLOGICAL INSTITUTE

## La Peregrina Pearl



© Swiss Gemmological Institute SSEF



© Swiss Gemmological Institute SSEF





## La Peregrina Pearl



**EDXRF Analysis Report**  
Thermo Electron

Sample List: 19574\_Chinaide (20110318 10:24)  
Analysis: ThermoElectron ThermoFisher (ThermoFisher)  
Method File: Z:\Data\EDXRF\method\pearl\_FPF\_pearl\_pearl.MTH

Results

Element	Concentration	SIS Det.
SiO2	99.78 %	0.17
CaO	0.11 %	1.2
Fe	0.01 %	3.8
SiO2	0.01 %	0.01
P	0.01 %	4.0
Si	0.01 %	0.01
Si	0.01 %	0.01







© Swiss Gemmological Institute SSEF

## Pearl and emerald tiara





© Swiss Gemmological Institute SSEF



## FW Cultured Pearl aggregate



© Swiss Gemmological Institute SSEF



## Cultured pearls with "new" beads



- 1) Natural pearls (of lower quality) as beads
- 2) Cultured pearls as beads
  - beadless freshwater CPs (e.g. China)
  - beadless saltwater CPs („Keshi“)
  - beaded CPs
  - additional CPs („Tokki“)
- 3) Shell pieces as beads (spherical or baroque-shaped)
- 4) Any material (not from a mollusk), such as ceramics, foam, marble...

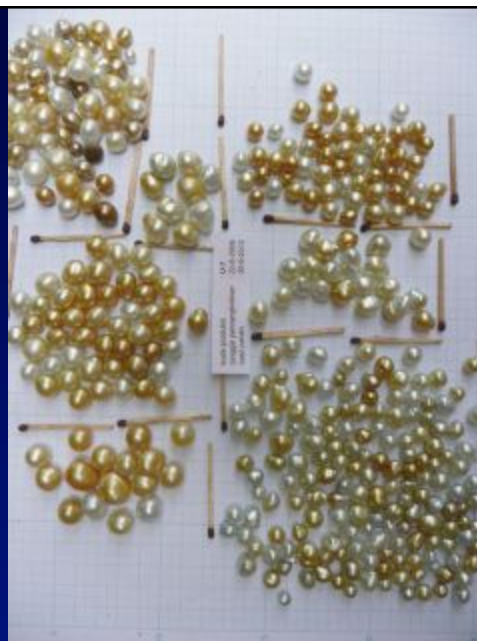
© Swiss Gemmological Institute SSEF





## Cultured pearls with natural pearls as beads

Photos: J. Casares



© Swiss Gemmological Institute SSEF



## Cultured pearls with natural pearls as beads



*Pinctada maxima*

© Swiss Gemmological Institute SSEF



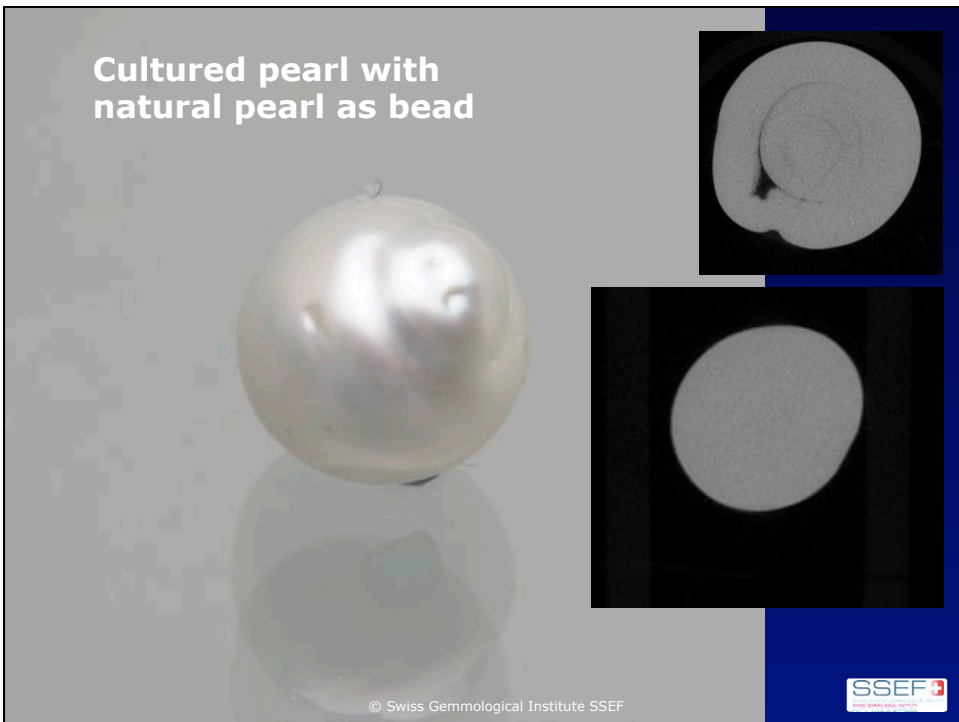
## Cultured pearls with natural pearls as beads



© Swiss Gemmological Institute SSEF



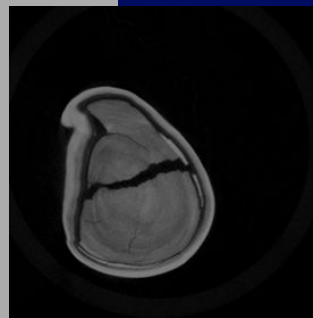
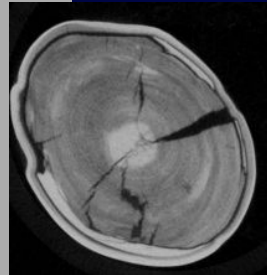
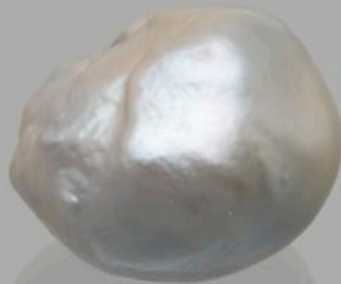
## Cultured pearl with natural pearl as bead



© Swiss Gemmological Institute SSEF



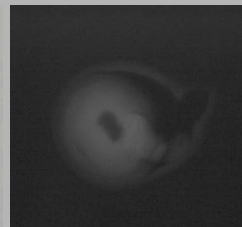
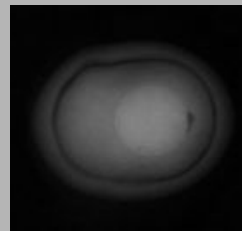
## Cultured pearl with natural pearl as bead



© Swiss Gemmological Institute SSEF



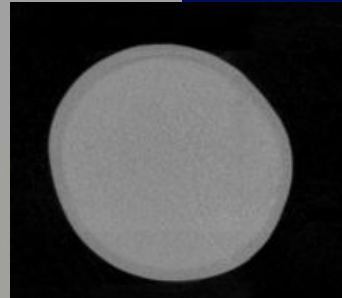
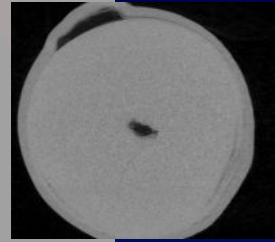
## Cultured pearls "new" beads



*Pinctada margaritifera*

© Swiss Gemmological Institute SSEF

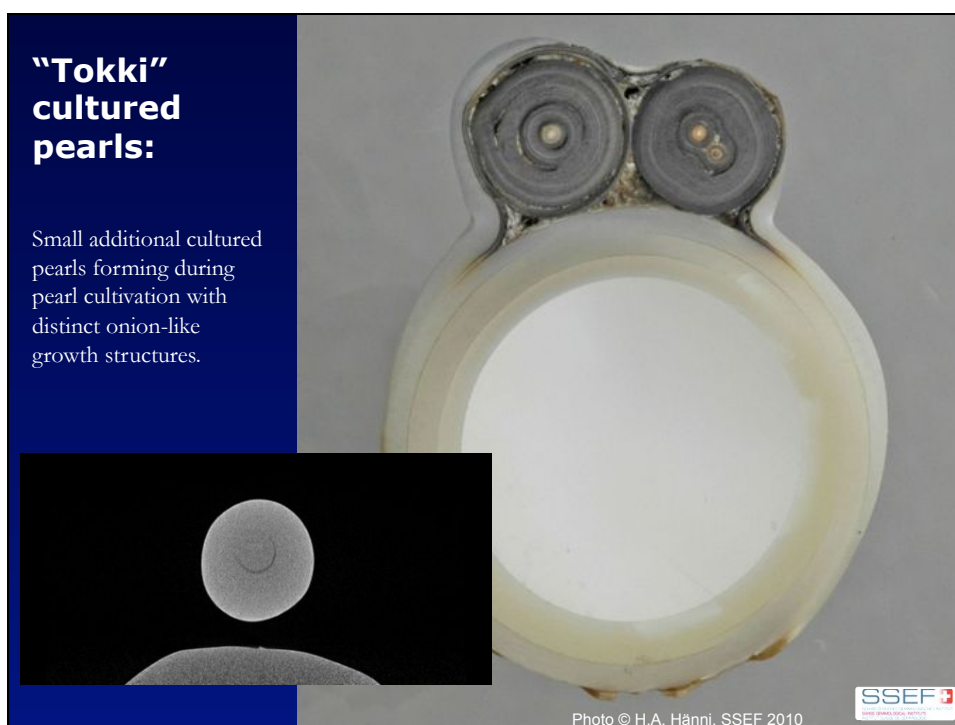
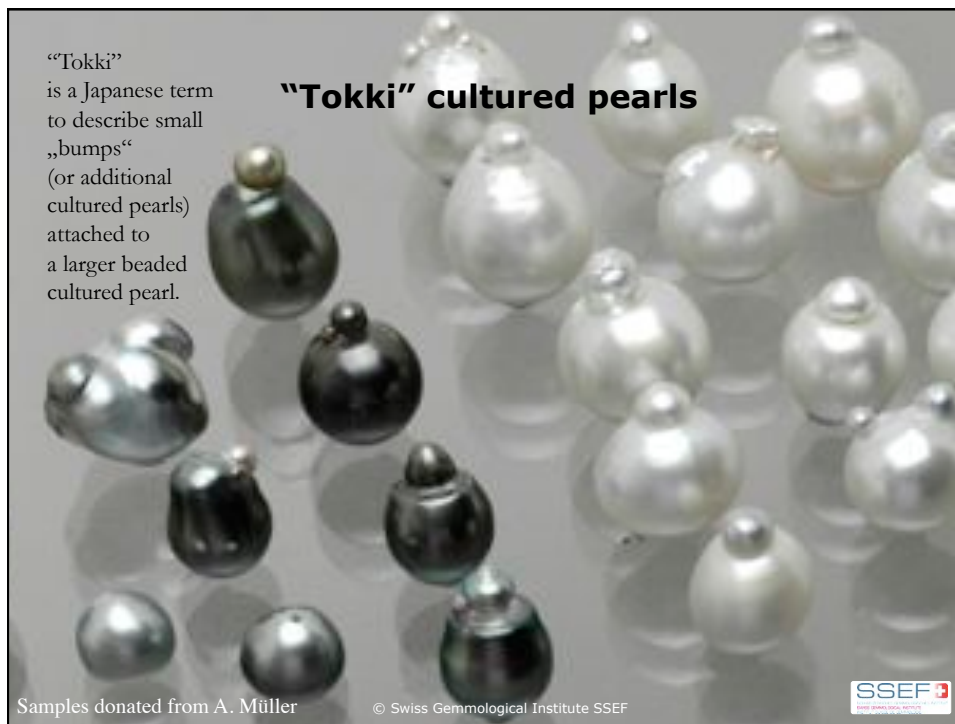




SSEF  
SARAJEVO SCHOOL OF ECONOMICS  
SARAJEVO SCHOOL OF ECONOMICS  
SARAJEVO SCHOOL OF ECONOMICS

[illegible]

**SSEF**   
 SCHWEDENSKA ENKELTIDEN SVENSKA ENKELTIDEN SVENSKA ENKELTIDEN  
 SVENSKA ENKELTIDEN SVENSKA ENKELTIDEN SVENSKA ENKELTIDEN





## Loose “Tokki” cultured pearls

Formation of additional cultured pearls **not** attached to larger cultured pearl:

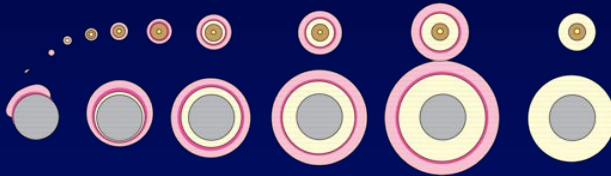
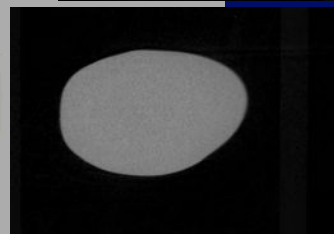
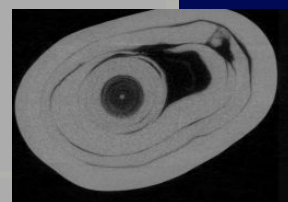


Photo © J. Casares

Loose „Tokki“ cultured pearls used as beads for pearl cultivation.



## Cultured pearl with additional cultured pearl as bead (“Tokki”)



© Swiss Gemmological Institute SSEF



## Cultured pearls with shell pieces as beads



## Different cultured pearl products from *Pinct. margaritifera*



## Cultured pearls with shell piece as beads

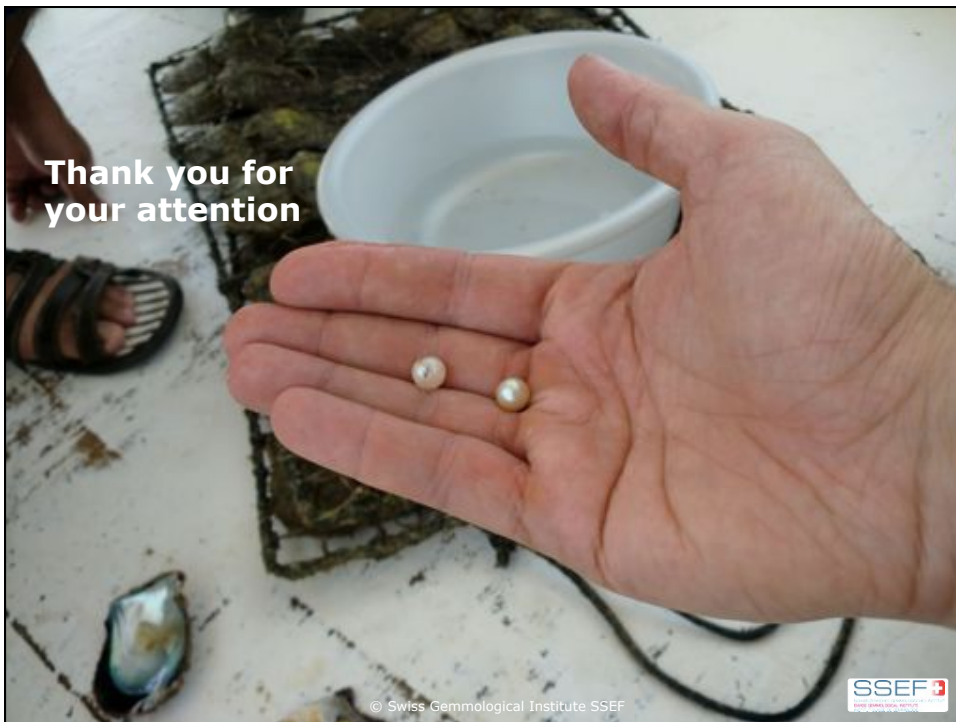


Thin nacre overgrowth on  
baroque shaped shell piece:  
*Pinctada maxima*

© Swiss Gemmological Institute SSEF



Thank you for  
your attention



© Swiss Gemmological Institute SSEF

